

Diamond Division
(Light and Heavy)



Company Profile.

Saiffee Engineering & Construction Company.



FIELDS OF SPECIALIZATION :-

1) REBAR DETECTOR / FERRO SCANNING :-

For detection of Rebar diameter, location, spacing & concrete cover. Basically used in absence of Structural Drawings for Reverse Engineering, Rehabilitation & Refurbishment jobs & to protect steel during drilling.

2) VIBRATION FREE DIAMOND CORE DRILLING / CUTTING :-

Used for making circular or linear openings in RCC members without hammering or percussion impact.

Range: Dia 8mm to 750mm x 4,000 mm {4.0 meters} depth.

3) VIBRATION FREE DIAMOND SAW & WIRE CUTTING :-

Used for making linear openings in RCC members, especially in Columns, beams, floors, foundations, slab.

Range {Saw cut}: 700mm deep from one side.

Range {Wire Saw}: Unlimited depths.

4) EPOXY CHEMICAL ANCHORING & REBAR DOWELING :-

Specialist application & execution contractor for all types of normal & critical Anchoring needs related to Rebar doweling, Chemical / Adhesive anchoring, mechanical anchoring etc.

Pure injectable Epoxies including **R-KEX-II** from “**RAWLPLUG**” and **VME** from “**MKT**” [**Germany**] are equally compatible with all worldwide leading brands. WE have approvals from several leading Consultants & Industrial projects.

5) DRILLING & BREAKING :-

Specialists in larger diameter & deep drilling in RCC and particularly where time and progress matters during Shutdown, Turnaround or on fast track / Time-barred projects.



FIELDS OF SPECIALIZATION :-

6) ANCHOR PULL-OUT TESTING :-

On-site Anchor pull out Testing facility is provided using 30 tons capacity Hydraulic Anchor testing kit.

7) TURNKEY PROJECTS:-

Having excellent capabilities & experience of executing as a Specialist engineering company (including Civil & Mechanical scopes), Turnkey projects for **Retro-fitting, Re-Strengthening & Structural Rehabilitation/ Refurbishment works.**

- Completed successfully HABIB BANK LIMITED {Exterior Facades work} in 2009-10.
- Fatima Fertilizer Co. Ltd., NP plant {Steel Jacketing of RCC Columns using SIMPSON Epoxy} in 2011.

8) UNDER WATER CORE CUTTING :-

Al-hamdo-lillah, the 1st company in Pakistan to attempt Under-water Core cutting using Hilti's DLP15/30 in combination with DD-750HY hydraulic core drilling equipments & complete it successfully in record time at the prestigious SUKKUR barrage rehabilitation project.

9) ENGINEERING EXCELLENCE:-

Al-hamdo-lillah, the 1st and only company in Pakistan having on-hands Experience, Expertise & Equipments to undertake large diameter reinforced concrete Core cutting jobs. SECC successfully performed Diamond Core Drilling in dia **750 mm x 4.0 meters** deep in heavily reinforced Raft foundations, at Lucky Cement Ltd & Mustehkam Cement Ltd.

10) FIBER REINFORCED PLASTIC {FRP} RETROFITTING & RE-STRENGTHENING OF RCC STRUCTURES:-

FRP retrofitting & re-strengthening of RCC structures {Columns, Beams, Slabs, Foundations, Piles, Tanks etc.}.

Diamond Division
(Light and Heavy)

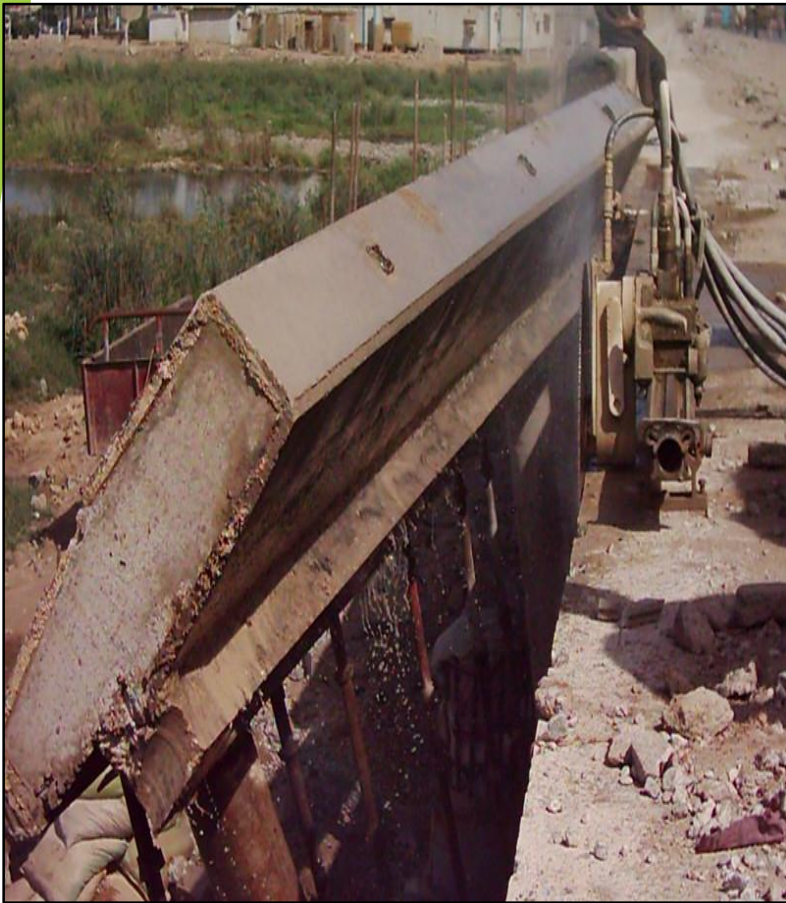


IMAGE / PICTURE FERROSCANNING.

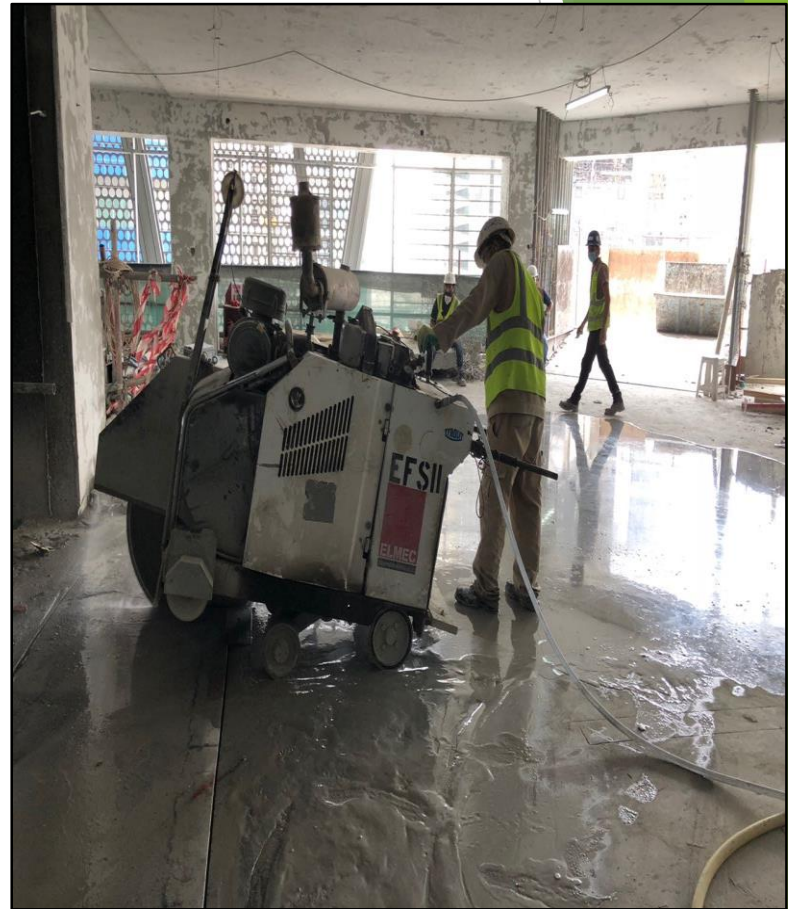


DIAMOND CORE DRILLING.

Diamond Division
(Light and Heavy)



DIAMOND CUTTING USING WALL SAW.



DIAMOND CUTTING USING FLOOR SAW.

Diamond Division
(Light and Heavy)



DIAMOND WIRE SAWING.



EPOXY REBAR DOWELING & ANCHORING OF RODS.

Diamond Division
(Light and Heavy)

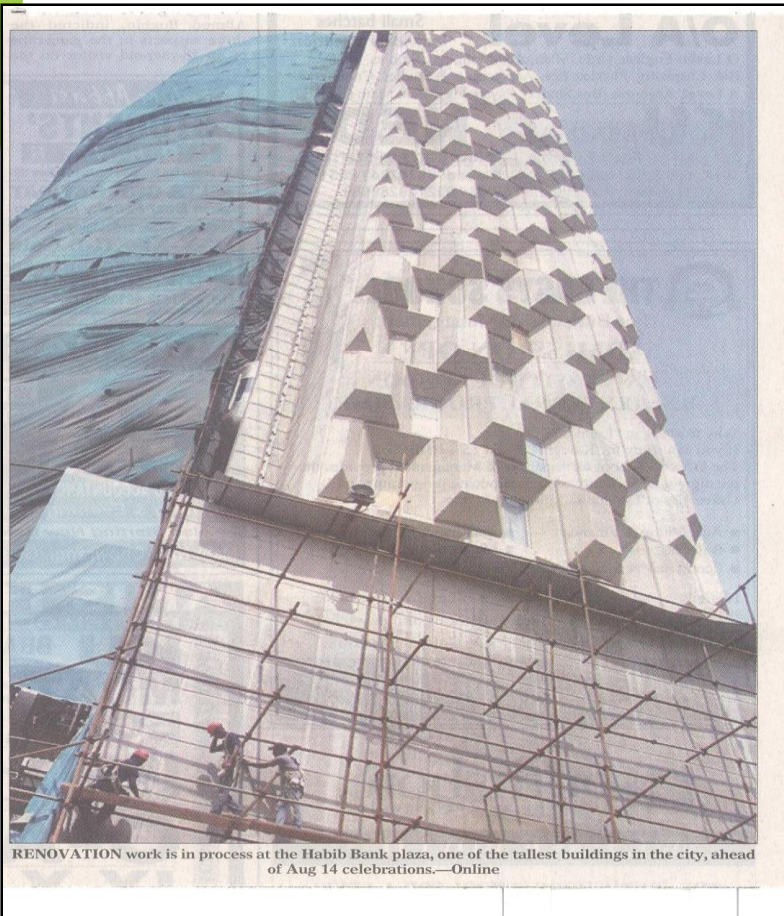


DRILLING & BREAKING.



ANCHOR PULL-OUT TESTING.

Diamond Division
(Light and Heavy)



TURNKEY PROJECTS: HABIB BANK LIMITED.



TURNKEY PROJECTS: FATIMA FERTILIZER CO. LTD.



Saiffee

Engineering &
Construction Co.

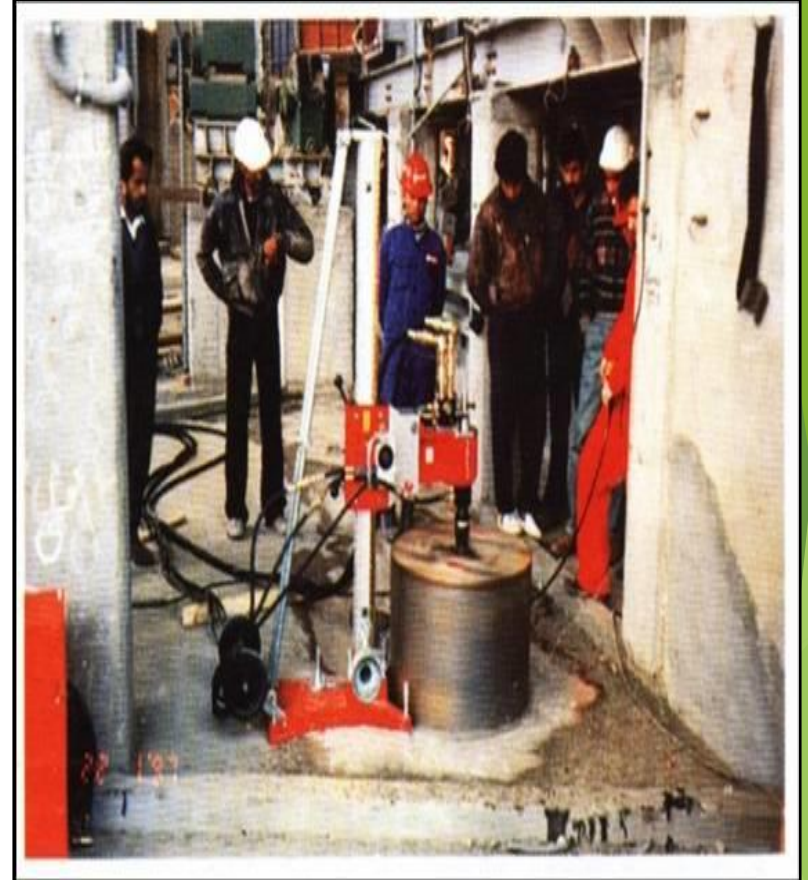
Formerly Diamond Drilling & Sawing Services

Diamond Division

(Light and Heavy)



UNDER WATER DIAMOND CORE DRILLING.

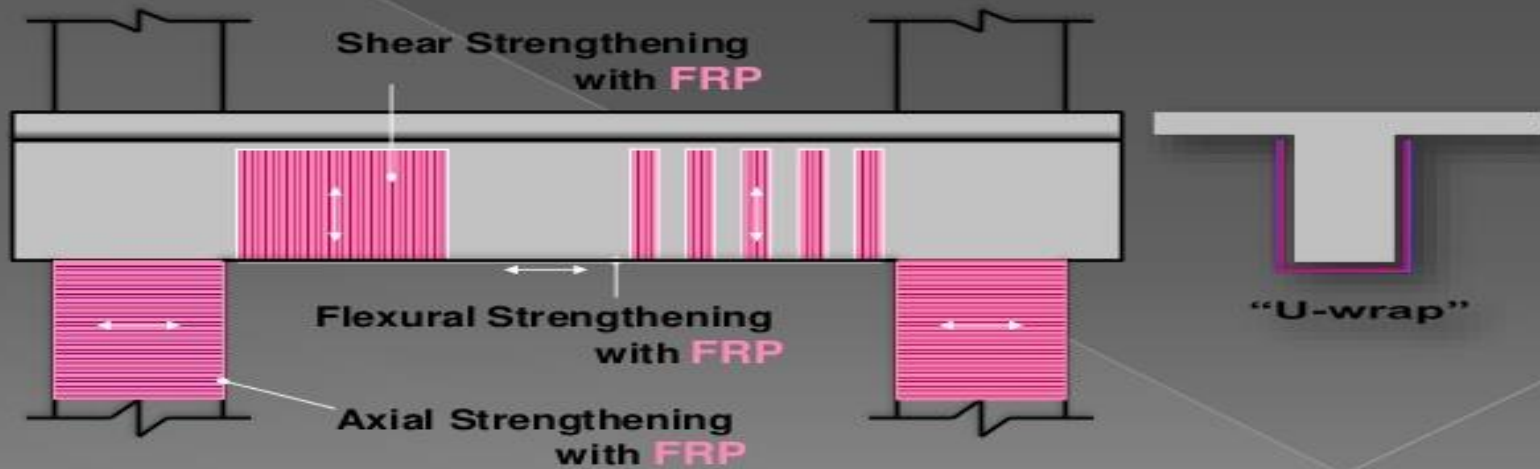


ENGINEERING EXCELLENCE:

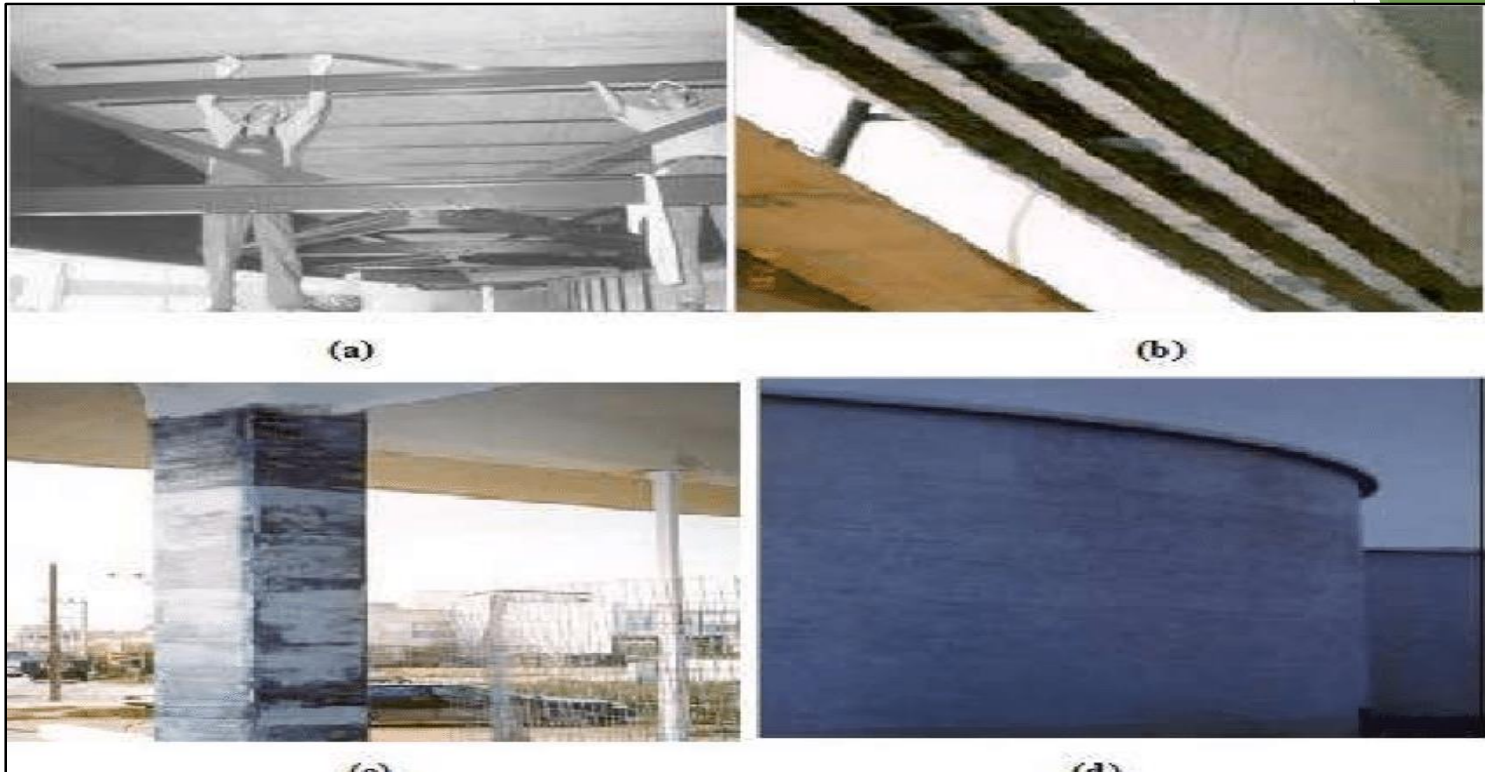
750 mm diameter DIAMOND CORE DRILLING.



Typical Strengthening System Detailing



FIBER REINFORCED PLASTIC / POLYMER [FRP] : TYPICAL STRENGTHENING SYSTEM DETAILING CHART.



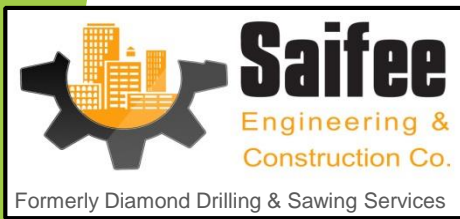
TYPICAL FRP APPLICATION EXAMPLES IN STRENGTHENING REINFORCED CONCRETE STRUCTURES:

(a) flexural strengthening of slab (b) flexural strengthening of beam (c) strengthening and confinement of a column (d) wrapping of a concrete tank.

Diamond Division
(Light and Heavy)



FRP APPLICATION EXAMPLES: RETROFITTING & STRENGTHENING OF RCC COLUMNS, BEAMS & PILES.



Diamond Division

(Light and Heavy)



COUNTRY WIDE CENTRES :-

Region South

Suite # 816, 8th Floor, Park Avenue, 24-A/6, PECHS, Opp. Lal Kothi stop, Shakra-e-Faisal, Karachi.

Telephone: + 92 21 34326891 till 93 Fax + 92 21 34326890

Cellular Nos: 0345 – 201 1170, 0307 – 786 2153.

Emails: info@saiffee.com.pk shabbbir@saiffee.com.pk

Region North

Office # 8, Mezzanine floor, 109-W, Sardar Begum Chambers, Jinnah Avenue, Blue Area, Islamabad.

Telephone: +92 51 2806301 & 2 Fax: +92 51 2806303

Cellular Nos. 0345 – 201 1170, 0307 – 786 2153.

Email: shabbbir@saiffee.com.pk

URL: www.saiffee.com.pk